

## SCH – iPM Downtime – Clinical

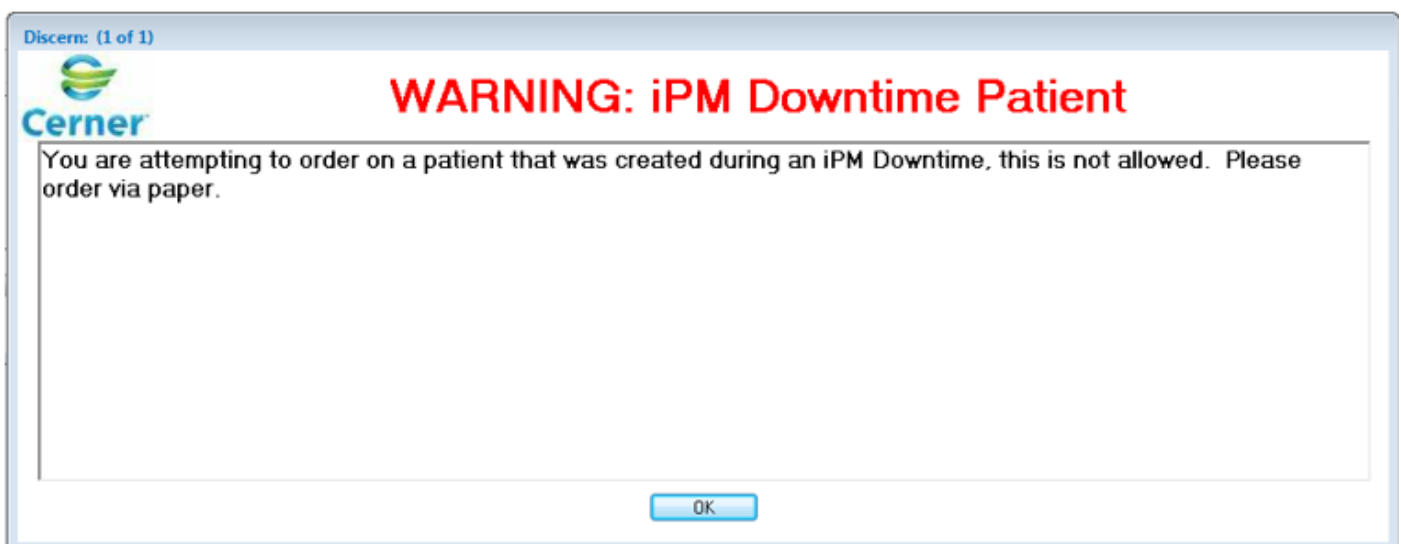
During an iPM downtime, Admin staff are still able to register and admit patients into the SCHN eMR.

Patients who already have an SCH MRN prior to the iPM downtime

- use standard documentation and electronic ordering procedures

Patients who had never been to SCH before the downtime commenced will NOT have an MRN until the downtime is finished and clean up processes are completed

- Use standard documentation procedures
- Electronic ordering will NOT be functional – orders will need to be printed and sent to pathology / medical imaging. If an order is placed on a patient without an MRN, a warning window will appear.



- Results will not be returned electronically to Powerchart (until the patient has an MRN created post downtime and all merges are finalised). To view results for these patients please use the links below:

[Pathology](http://ransls10/sls/apl/dls/Site.C079.UI.Common.SearchCriteria.cls?$RedirectEpisode=OMNI.UI.Common.ResultsEnquiry.cls&$RedirectPatient=OMNI.UI.Common.SearchEpisode.cls)

[Medical Imaging](http://10.40.120.36/ami/html/) (http://10.40.120.36/ami/html/ in internet explorer) or access via the AL window icon

